



Larder Units

Tandem II 600

The intelligent pull-out technology draws the rear section forwards, creating a complete overview of all cabinet contents.

- Unique Split storage
- Universal system for left & right installation
- Integrated soft-close
- Easy shelf height adjustment
- Carcass mounted (limited weight on cabinet door)
- 5 Trays = 5 levels of storage

**Not suitable for use with dampened hinges.*



Max 85kg



3D AdjustFixx



ClickFixx



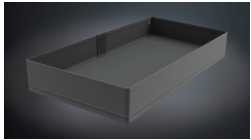
SOFTSTOPP

ARENAplus

Type/Option/
Version

Colour and
specification

600 - 1200mm*
cabinet size



Anthracite
Pure
5 Trays

Image

Items

Product
Codes

Matching
Accessory

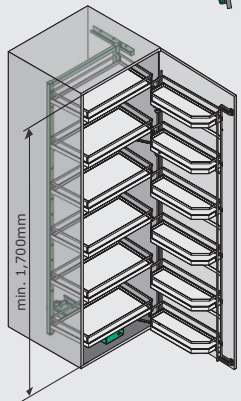
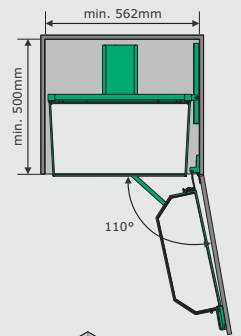
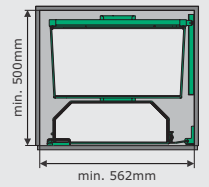


Tandem II Frame Set
Tandem II Door Set

KS0035269846
KS0036119846

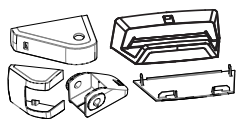


110° Hinge set
HE1029520 +
HE1071607

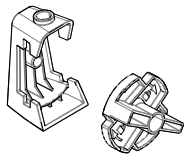


Optional Accessories & Spares

Customers also purchased



Tandem Side Mount Kit
KSS1691997500



Clamping Kit
KSS1692007500



Follower Arm
KSS59021898



K-Line 300 Base
KS0021429846



Move Board 450
KS2386779846/89846

Scope of supply

- 1 x Soft-close runner
- 1 x Frame set
- 5 x Trays
- 1 x Door tray set
- 1 x Accessory kit
- Mounting instructions

**Two systems required for 1200mm application.*